



PCM

**£1,650 PCM**

**Myrdle Street**

London, E1 1EU

1 double bedroom apartment set on the 1st floor of a period conversion in the heart of Whitechapel.

The property features a bright open plan kitchen to reception room, large double bedroom with built in wardrobe and access to a modern fitted bathroom.

Located just a few moments walk from Whitechapel Underground Station with Brick Lane, Spitalfields Markets and Liverpool Street Station all close by.

Fully furnished.

5 weeks deposit £1903.84

Council Tax: Band B

Available: end of July





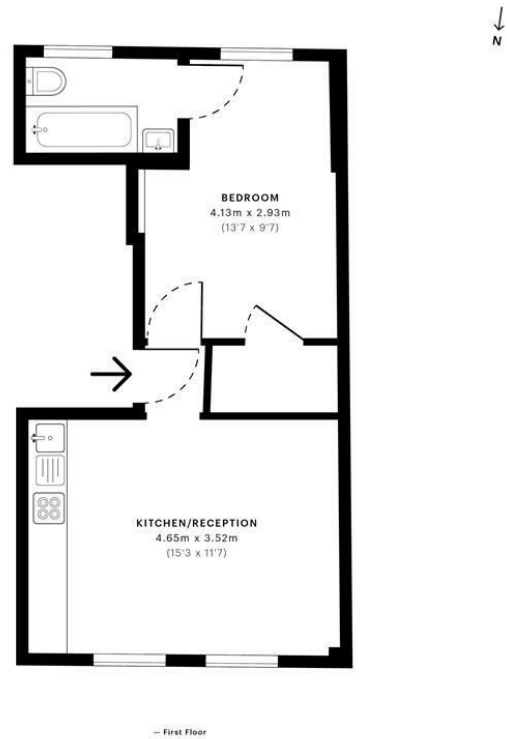


Myrdle Street, E1

CAPTURE DATE: 01/03/2021 LASER SCAN POINTS: 1,017,344

GROSS INTERNAL AREA

33.93 sqm / 365.22 sqft



Energy Efficiency Rating		Current	Potential
Very energy efficient - lower running costs			
(92 plus) <b>A</b>			
(81-91) <b>B</b>			
(69-80) <b>C</b>			<b>74</b>
(55-68) <b>D</b>		<b>57</b>	
(39-54) <b>E</b>			
(21-38) <b>F</b>			
(1-20) <b>G</b>			
Not energy efficient - higher running costs			
<b>England &amp; Wales</b>		EU Directive 2002/91/EC	

Agents Note: Whilst every care has been taken to prepare these particulars, they are for guidance purposes only. All measurements are approximate and are for general guidance purposes only and whilst every care has been taken to ensure their accuracy, they should not be relied upon and potential buyers/tenants are advised to recheck the measurements

<b>GROSS INTERNAL AREA (GIA)</b> The footprint of the property 33.93 sqm / 365.22 sqft	<b>NET INTERNAL AREA (NIA)</b> Excludes walls and external features Includes mezzanines, open void head height 32.72 sqm / 352.20 sqft	<b>EXTERNAL STRUCTURAL FEATURES</b> Balconies, terraces, verandas etc. 0.00 sqm / 0.00 sqft	<b>RESTRICTED HEAD HEIGHT</b> Controlled use area under 2.0m 0.00 sqm / 0.00 sqft
--	---	---	---

Spec Verified floor plans are produced in accordance with Royal Institution of Chartered Surveyors' Property Measurement Standards. Plans and gardens are illustrative only and excluded from all area calculations. Due to rounding, numbers may not add up precisely. All measurements shown for the individual room lengths and widths are the maximum points of measurements captured in the scan.

IPM133 RESIDENTIAL: 34.09 sqm / 366.94 sqft  
IPM130 RESIDENTIAL: 32.88 sqm / 353.92 sqft

spec id: 6038268544a31c0dd8a8a2d3

**OFFICE ADDRESS**  
88 Cheshire Street  
London  
E2 6EH

**OFFICE DETAILS**  
0207 739 6969  
info@peachproperties.com  
www.peachproperties.com